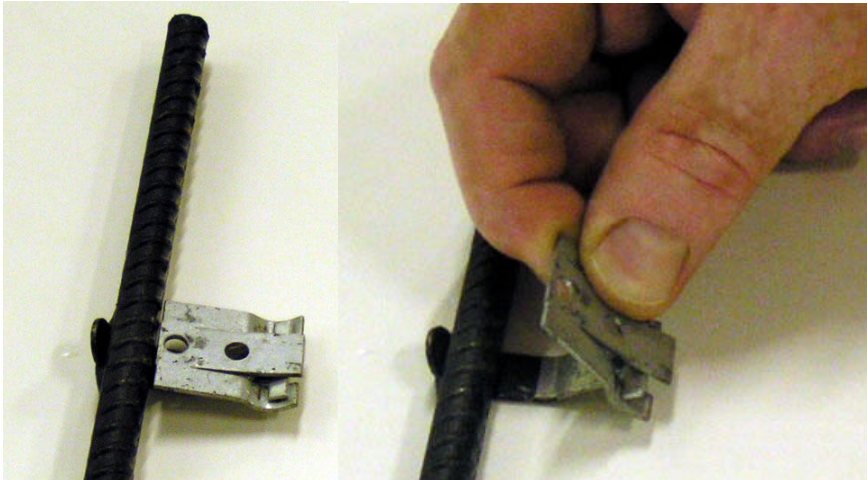


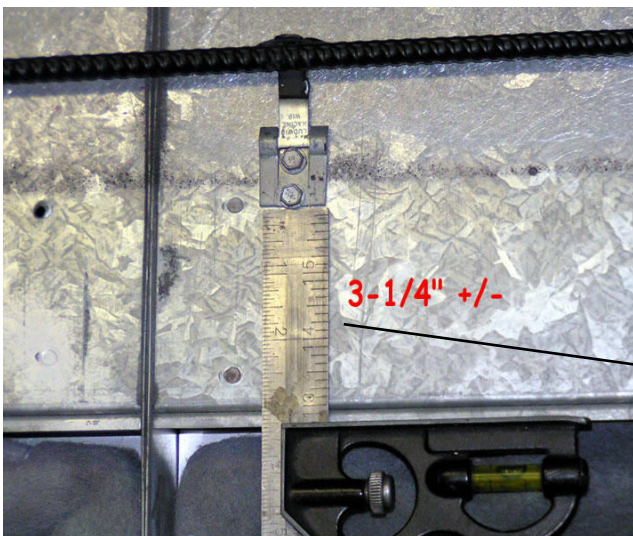
Snap bar Installation



Bar snaps down
To hold roll filter
In place



Instructions:
Unfold snap bar clamps.
With bar up, locate clamps on booth wall. Make sure FLAT side of clamp is against the booth wall.
Screw clamps to booth wall.
Place roll filter under bar.
Snap bar down over filter.



3-1/4" +/-

Bar Up

Flat side of
Clamp against
Booth wall

Locate bottom of
Clamp 3-1/4" +/-
From top of filter
Grid.

